



PTES

PRECI-TECH ENGINEERING SERVICES

(Manufacturing of Precision Mechanical parts & Sub -Assemblies)



Serving the needs of Glass Container Industries Globally

Join 
Friends of Glass

Preci - Tech Engineering Services



PTES

Serving the needs of Glass Industries Globally

**MANUFACTURING HIGH PRECISION SPARE PARTS , WEAR PARTS ,
SUB-ASSEMBLIES & MECHANISMS FOR GLASS FORMING I.S.
MACHINES.**

Join
Friends of Glass

About Us

“Preci-Tech Engineering Services” is a manufacturing organization with a goal to supply high quality & high precision mechanical parts from India , at a very attractive costs.

We supply precision spare parts, sub-assemblies, various mechanisms & variable equipments for - **glass container forming I.S. machines, Ampoule forming machines & Flat glass machines.**

We also supply finish glass moulds & its accessories ,glass mould castings CI,SGL & Aluminum Bronze of different sizes, shapes & capacities.

We offer manufacturing of quality engineering products from India . Our services are tailored to your requirements, whether you are looking for standard or custom engineered products.



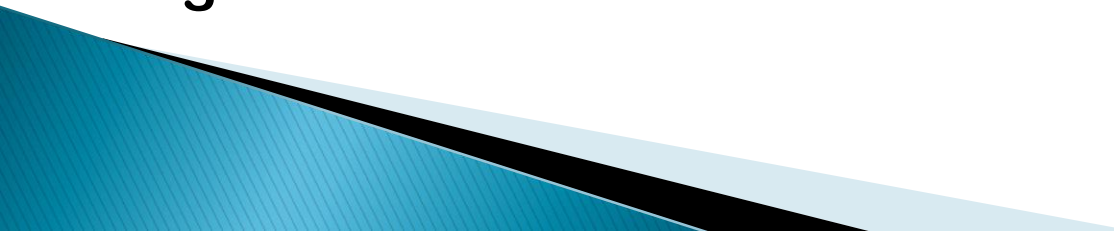
Join
Friends of Glass

We are manufacturer & exporter of precision mechanical components, Sub-assemblies, Mechanisms , Variable Equipment's for **glass container forming I.S. machines, Ampoule forming machines & Flat glass machines.**

All these items are manufactured as per international quality standards, by using advance technologies, latest CNC machines, measuring equipment's, excellent quality raw materials tested in NABL laboratory, advance heat treatment & surface treatment processes.

We have world class manufacturing & inspection facilities under one roof.

We have tie up with many excellent raw material suppliers, Ferrous & non ferrous foundries & forge shops, Heat treatment & surface treatment suppliers, Material testing labs, X-Ray & Ultrasonic testing labs.



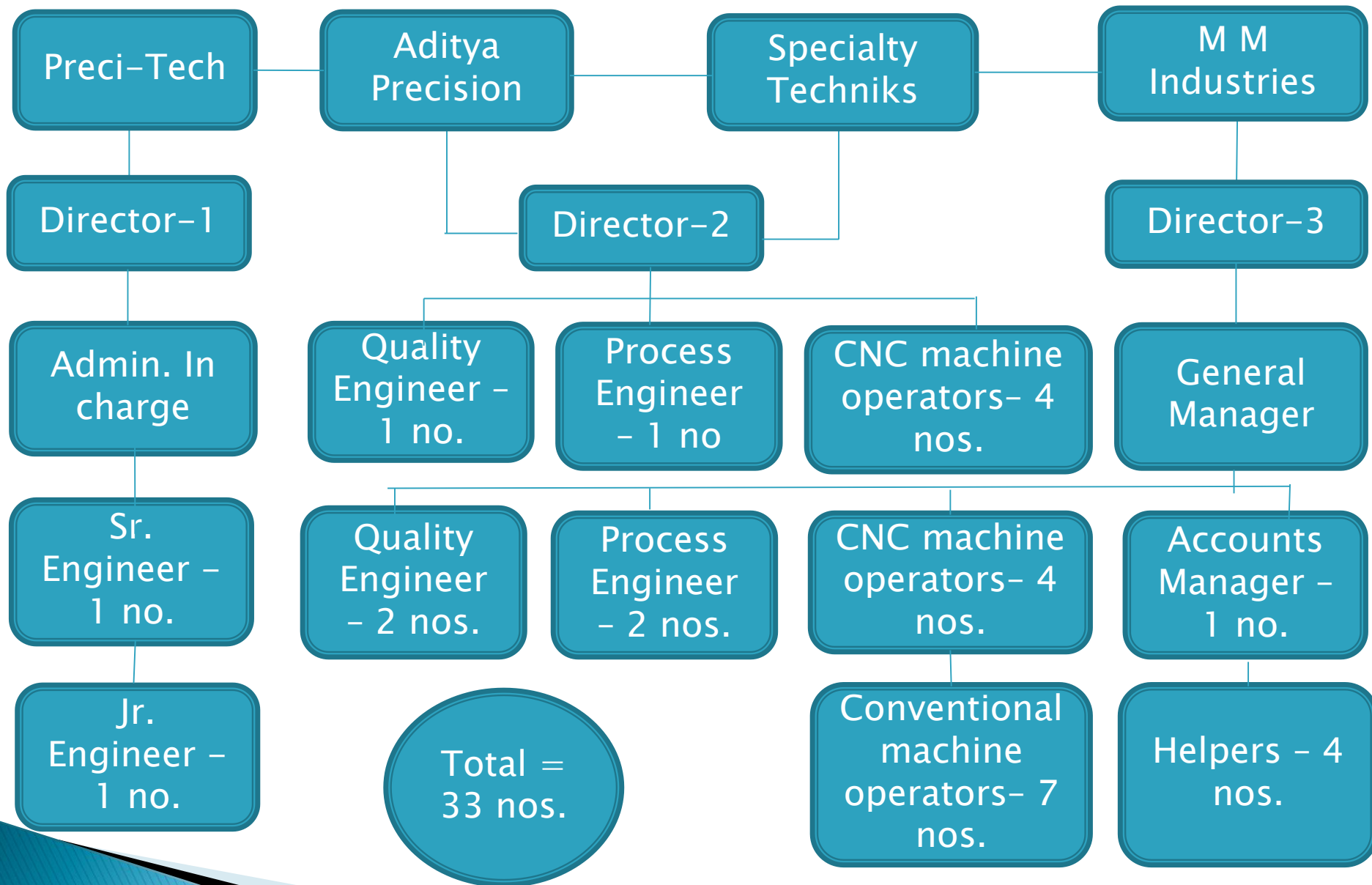
We have three manufacturing units –

- 1) M/S. Aditya Precision Engineering
- 2) M/S. Specialty Techniks
- 3) M/S. M.M. Industries

We are divided responsibilities as below –

- 1) Preci-Tech's responsibility is - Marketing, Sales , Purchase , Development of sub-contractors, Commercial, Accounting & costing, Import & Export, Logistics etc.
 - 2) Aditya Precision Engineering & Specialty Techniks responsibility is –, Production Planning & Scheduling, CNC Turning & VMC Process design & Manufacturing, Inspection & Quality, Packing & Delivery etc.
 - 3) M.M. Industries – Fixturing & Tool design, Conventional & VMC process design & manufacturing, Sub-contracting of operations like HT, Surface Treatment, Grinding, Honning etc. Inspection & Quality, Packing & Delivery etc.
- 

PTES Groups Organization Structure



We are located in Pune, India. Because of automobile & mechanical industrial hub we have excellent technical support in & around Pune for all types of processes.

Working as ZDS (Zero Defect Supplier) with all our customers.

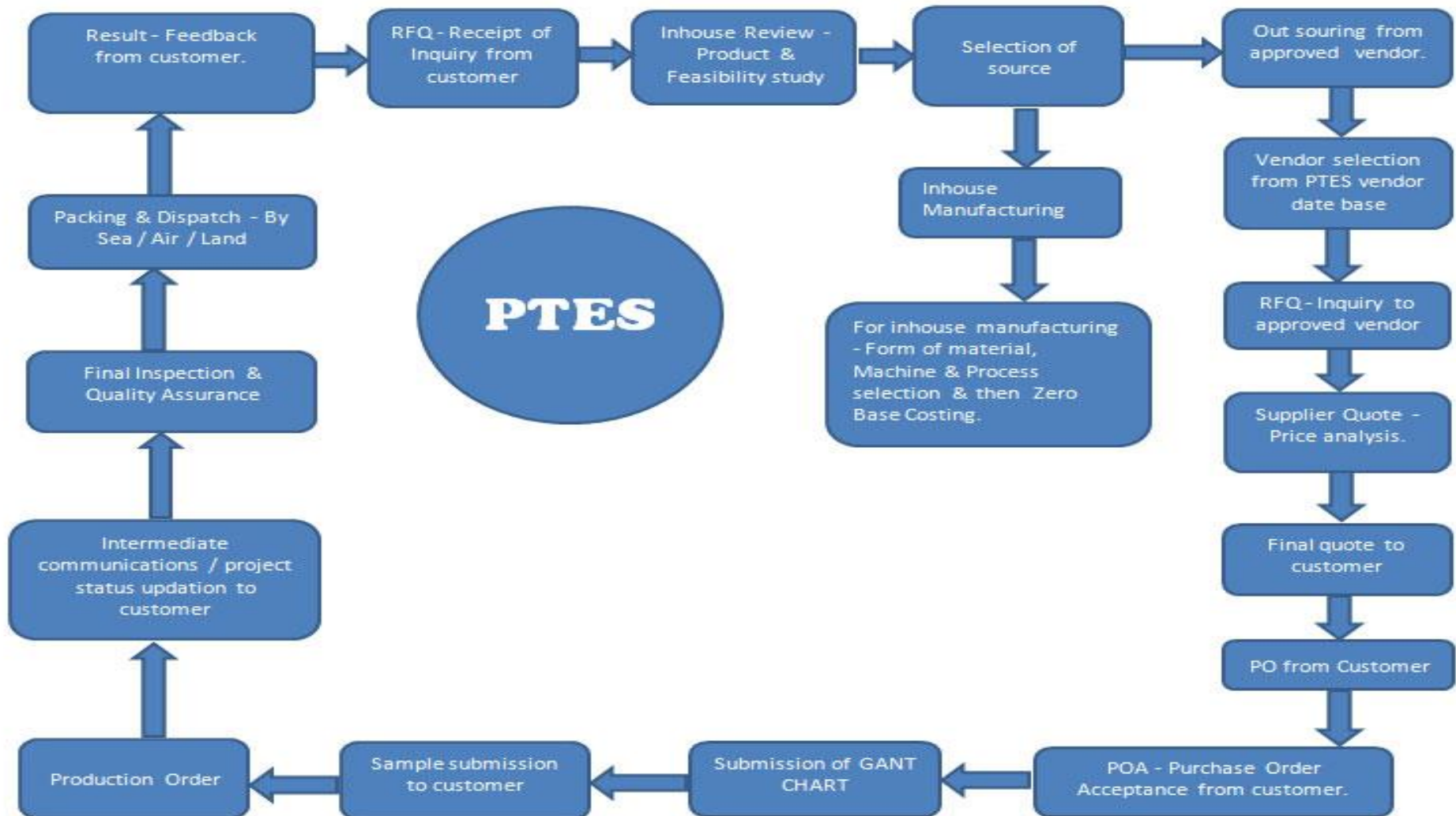
- ☐ Expertise in tooling design & machining
- ☐ Assured precision & international quality
- ☐ Low cost
- ☐ On-time delivery

We Accept Challenges & Deliver Results

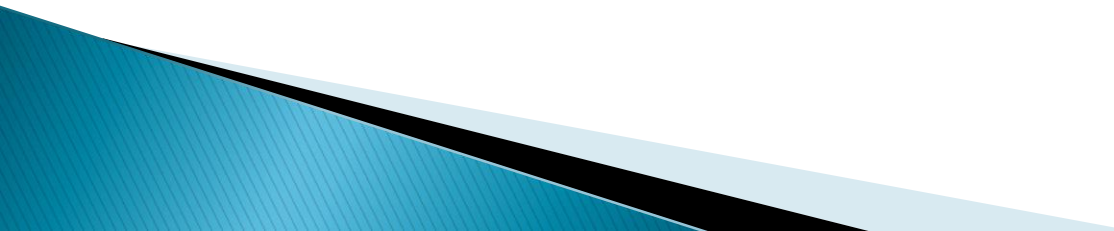
We give best services to our customers in terms of
Low Cost , Less delivery period & International Quality.

We take pride in the systems that we have developed and perfected through our experience. We follow a systematic approach throughout the business cycle.

PTES - PRODUCT DEVELOPEMNT / SOURCING OVERVIEW



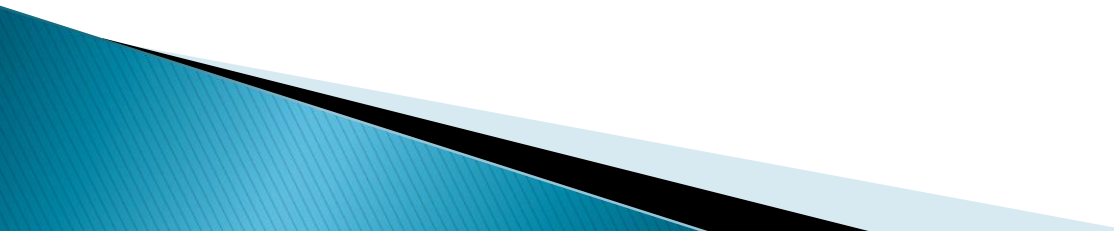
We serve the needs of the worldwide Glass & engineering industries through

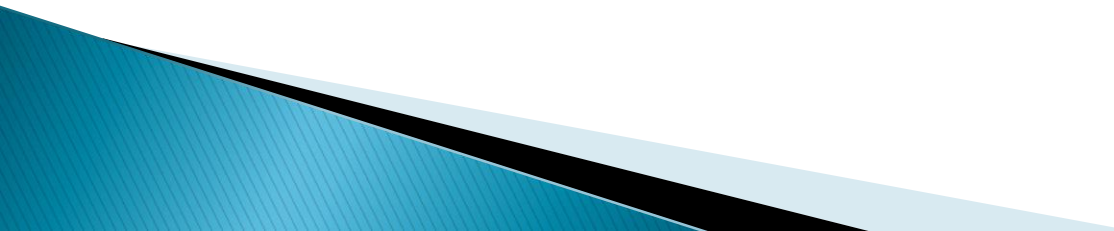
- ☐ To understand customer needs and accordingly , our entire team will apply their innovative ideas & do complete feasibility study.
 - ☐ Abilities to adapt standard production systems to fit exactly what the customer wants.
 - ☐ Quality is our passion . We provide business enterprises top - rate quality products & at low cost
 - ☐ Through our products, we aspire to give our clients a competitive edge
- 

WHY WORK WITH US

- ☐ A team of highly experienced, dedicated & skilled professional individuals who have passion to excel in their areas of expertise.
 - ☐ Having world class manufacturing & inspection equipment's a vision to exceed customer expectations in all areas.
 - ☐ Components manufactured are exported by us directly or through our customers who are engaged in Global Sourcing activities.
 - ☐ Our investments in Tooling, Jigs & Fixtures, Inspection & testing facilities, Painting, Washing, Packing etc set us apart from other players in the similar line of business.
- 

How

- Proper selection of processors & evaluation methods for all category of items. Excellent supplier base for raw materials, machining, heat-treatments.
 - Detailed process design – Complete feasibility study & risk analysis is done prior to process the parts. Cost effective process without compromising on quality of product
 - In process inspection of parts at every stage of operations. Hence '0' risk due to process rejection.
 - Ultra modern manufacturing & inspection facilities available under one roof. Periodic calibration of all equipments done consistently.
- 

- All category of raw materials (**Physical, Chemical, Microscopic, Non – destructive etc.**) tested on latest test equipment's at NABL accredited laboratory. Hence zero risk of rejection of raw materials.
 - Proper planning & scheduling of parts is done at all the departments depending upon the customers delivery date.
 - All activities are performed as per **ISO 9001:2008 / TS16949 Quality Systems** requirements. Periodic audits of systems are conducted Internally & Externally to maintain consistent quality of products.
 - Production System Designed for both - batch & high volume manufacturing.
- 

- ❑ We have team of qualified engineers, excellent vendor base with ultra modern equipments & using best manufacturing practices for all category of products.
- ❑ We have tie ups with many excellent sources for following category of items in India & their facilities are as follows .

Raw Material Suppliers

Steels - Rounds, Flats, Hex, Square , Tubes in hot & cold rolled conditions. Ferrous & non-ferrous materials, Special alloys in all forms. Plastics, Foams, Acrylic , PTFE , Graphite, Continuous castings, Dense bars Centrifugal cast parts

Machine Shops

Having HMC's, VMC's, CNC Turnings, Turn-Mills, VTL, Grinding – Jig, Surface, Cylindrical & Center less , Honning, Burnishing, Lapping, Gun Drilling, CNC EDM & Wire Cutting, Broaching, Gear hobbing , shaving & grinding . Also having conventional machines - Lathes, Milling, Drilling, Thread rolling, Shaping & Automats etc.

Foundries

Sand castings , Investment castings, Centrifugal castings , Pressure & Gravity die castings from few grams to 25000kg single piece

Forgings

Open & Close die (Hot & Cold) forgings in ferrous & non- ferrous materials


Heat Treatment Shops

Case Carburizing , Induction hardening, Through hardening, Sub-Zero treatment, Tempering , Liquid, gas, ion & vacuum nitriding, Annealing, Normalizing etc . are carried out in Sealed quench furnaces using CNC controls.

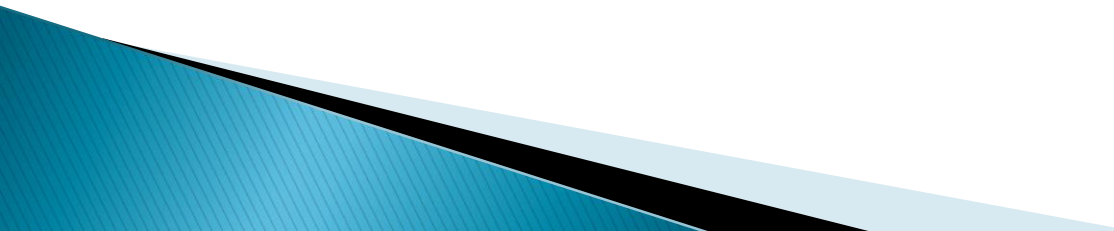
Surface Treatments

Black oxidizing , Hard anodizing , Yellow & Silver passivation , Phosphating, Painting, Hard chrome plating, Electroless nickel plating, Powder coating etc.

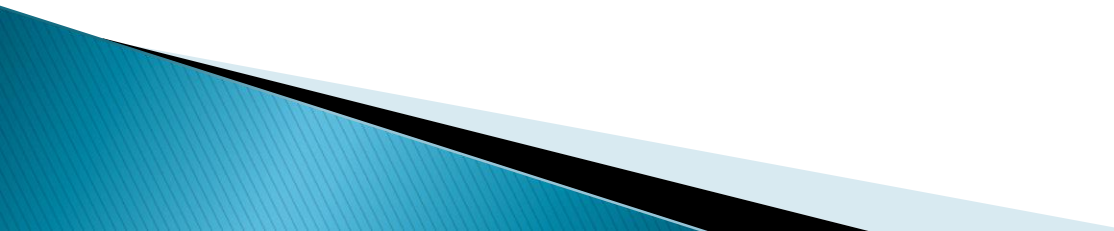


- Sheet metal & fabrication & press parts.
 - Plastic & rubber injection moulded parts .
 - Fasteners , Springs, Sintered bearings & bushes , other standard , Non -Standard & bought out parts suppliers are available in our data bank. **Our aim towards our customers is “Just call and get all”**
 - ☐ Close attention paid day to day to our Customers & Vendors
 - ☐ Detailed knowledge of regional & foreign Sources & Markets
 - ☐ Innovation capacity applied to product Development with our customers
 - ☐ Attention to end-customer satisfaction.
 - ☐ We follow best Management practices
 - Partnership with Customer & Vendors
 - Departments with clear focus
 - Periodic Reviews of performances
- 

We supply all international grades of materials confirming to IS, BS, ISO, ASTM, DIN, JIS standards.

- ✓ Carbon Steels & Alloy Steels, Stainless Steels & Alloys
 - ✓ Aluminum Bronze, Brass & Bronze, Aluminum
 - ✓ Grey cast iron castings, Sintered Ferrous & Non-ferrous parts
 - ✓ Ductile iron castings
 - ✓ Non-Ferrous Gravity & Pressure die casting
 - ✓ Sheet metal, Fabricated & Welded components
 - ✓ Ferrous & Non ferrous Investment castings
 - ✓ Ferrous & Non ferrous Forgings
 - ✓ General Steel & Alloy steel castings
 - ✓ Centrifugal cast products Ferrous & Non ferrous centrifugally cast parts
 - ✓ Teflon(PTFE)
 - ✓ Hastalloy, Inconel ,Graphite, Gun Metal, Acrylic, Super duplex,
 - ✓ PVC, Nylon, PP, Neoprene, Viton Rubber, EPDM Rubber, Nitrile Rubber
 - ✓ (Liners & Bushes)
- 

Our Commitments to customers

- ❑ We monitor delivery schedules of customer orders by regular inter department interactions & communications / visits with sub-contractors so that no failures in deliveries.
 - ❑ We attend customer complaints e.g. quality issues, rejections, delivery issues, rework, communication problems, logistic & transport related problems etc. & submit CAPA to customers hence futures problems will not repeat again.
 - ❑ We participate with customers in – New product developments, price reduction / value engineering suggestions, quality & process improvement programs.
- 

Machining Facilities

VMC (BFW Agni) – 2 nos.



VMC (Hartford) – 1 nos.



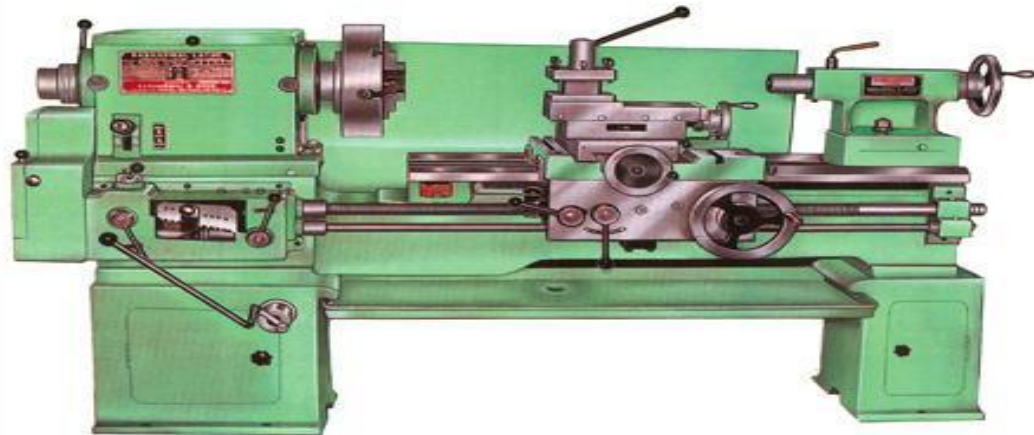
CNC Lathe (Jyoti) – 1 no.



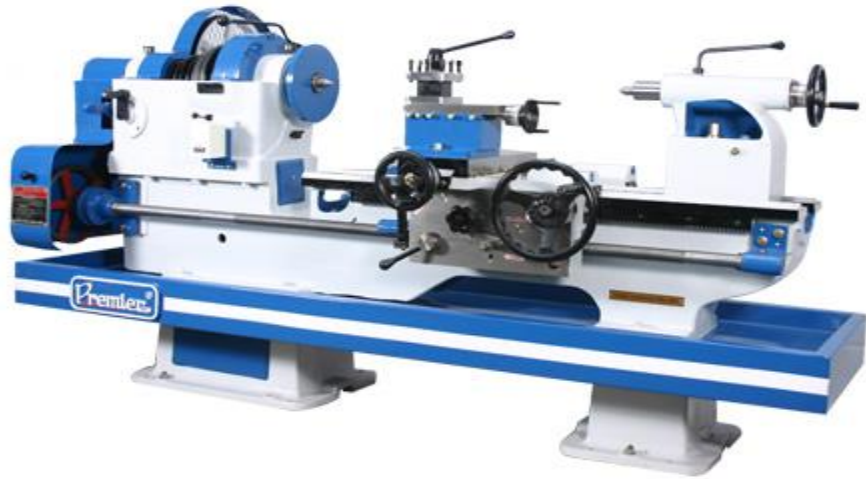
Conventional Milling machines with DRO



Conventional Lathe Machine



Conventional Lathe m/c



Cylindrical Grinder



Surface Grinder



Drilling m/c



Inspection Equipments And Material Testing Facilities



Digital Hardness Tester



Electronic Height Gauge



**C
M
M**

Spectrometer for Material Testing



Casting Foundries & Heat Treatment



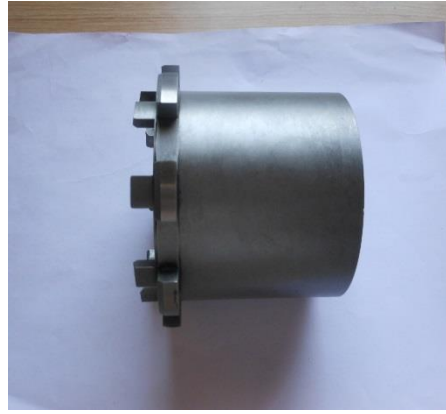

Casting Foundry

Heat Treatment – Sealed Quench Furnace

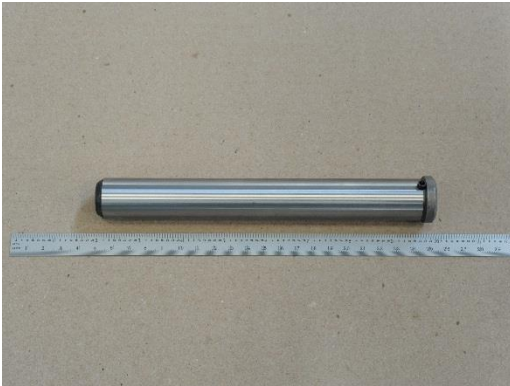


OUR PRESTIGIOUS OVERSEAS CUSTOMER

Germany



← **Guide & Lower Spring Retainer**



← **Link Pins – of 3 different lengths**



← **DECKEL (COVER)**

OUR PRESTIGIOUS OVERSEAS CUSTOMER

Italy



INSERT ASSEMBLIES – DG-5 1/2" - Dia. 6" & 5 3/8" Upper & Lower Inserts



Lock Rings , Cut Out Bushings & Connecting Links



OUR PRESTIGIOUS OVERSEAS CUSTOMER

Switzerland



Quality Philosophy

We are committed to quality, integrity and excellence in everything we do. In order to meet our mission and achieve our vision, We must:

- ☐ Consistently meet or exceed customer requirements.
- ☐ Continuously improve the processes through which we deliver our products & services.
- ☐ Provide staff with the training and tools necessary to contribute to our quality effort.
- ☐ Perform all the activities by maintaining **EHS** norms

Our success will be measured by customer satisfaction

Environment , Health & Safety Policy

Our company gives esteemed importance to Environment protection, Health & Safety.

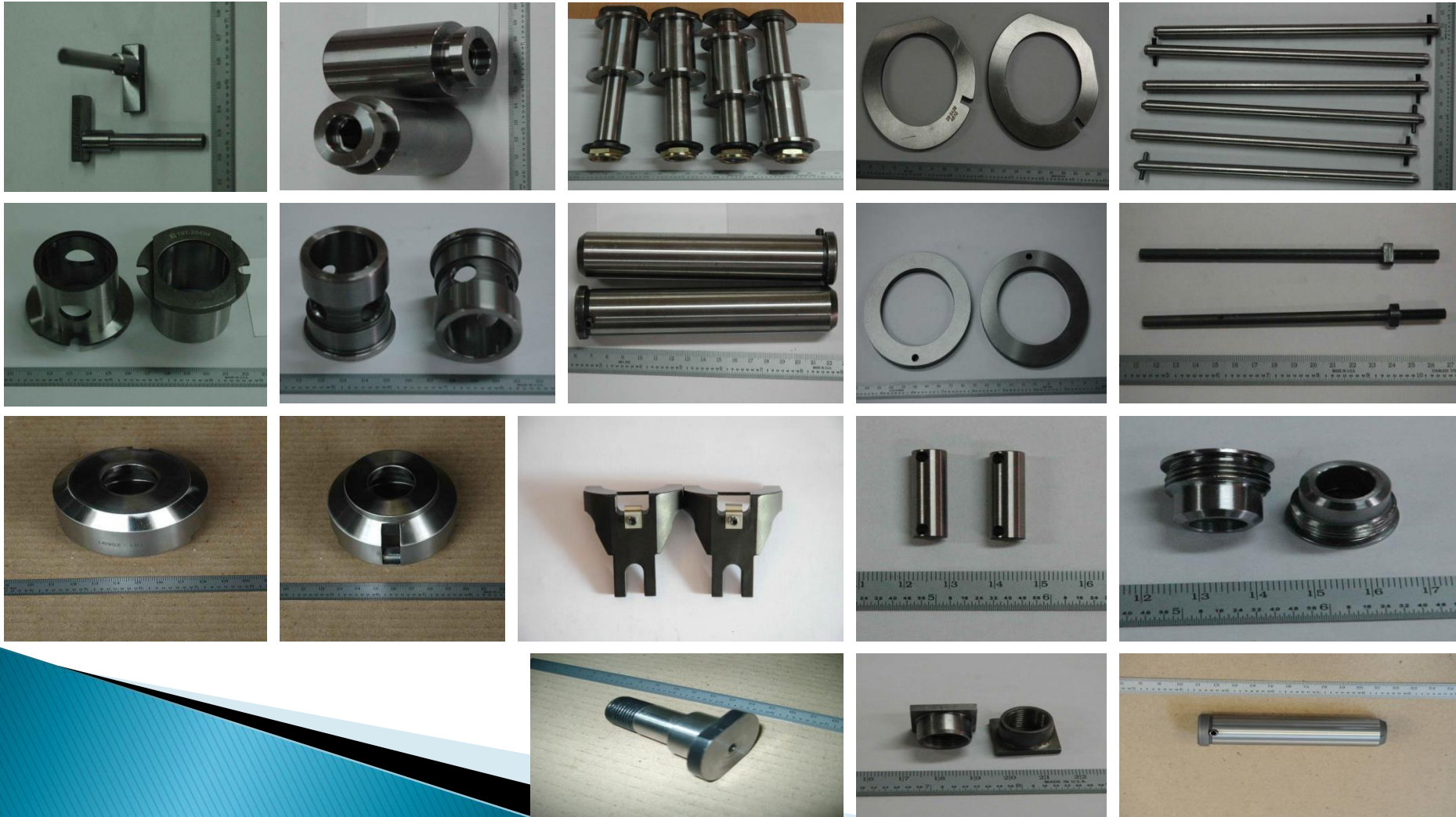
We also ensure that our partner companies spend requisite amount of money every year to update their **EHS** related devices.

We strongly discourage child labour

Our aim towards Customers

“Just Call and Get All”

We need either part drawing or sample. If you give us part samples, we do reverse engineering & parts will be supplied as per original sample or better than the sample.

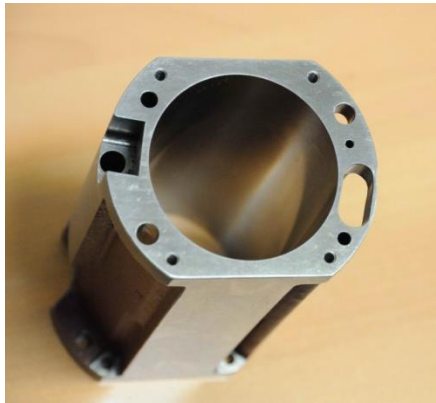
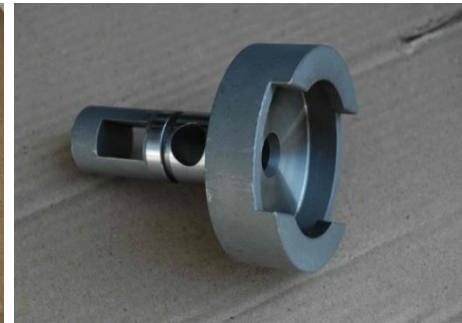
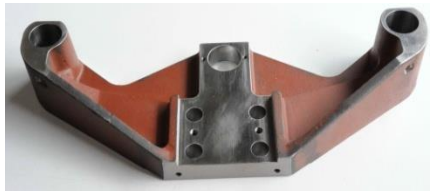


Mould & Neck ring holders, Inserts SG /DG/ TG of different sizes



Tong holders, Take out tong heads, Pistons, Links, Feeders





Different types of Bushes , Connecting Links , Lock rings , Tong holders, Lower plunger cylinder, Retainer, Levers, Gears



Lock Rings ,Finger,Bushing, Springs ,Lever,Gear Holder



Glass Moulds & Its Accessories



Preci - Tech Engineering Services



**MANUFACTURING HIGH PRECISION SPARE PARTS , WEAR PARTS ,
SUB-ASSEMBLIES & MECHANISMS FOR GLASS FORMING I.S.
MACHINES.**

Registration Details :

VAT TIN No. – 27800871344 V

CST TIN No. – 27800871344 C

ECC No. – BROPK0636AE001

IEC CODE – 3112005244

BANK – AXIS BANK LTD., Branch – Chinchwad, Pune-19

Current A/C No. – 911020060688083

SWIFT CODE – AXISINBB103

Preci - Tech Engineering Services



**MANUFACTURING HIGH PRECISION SPARE PARTS , WEAR PARTS ,
SUB-ASSEMBLIES & MECHANISMS FOR GLASS FORMING I.S.
MACHINES.**

Office – “Shyama Estate” , Unit – D, Flat – 16, Sector – 18, Shivtejnagar
Chinchwad, Pune – 411 011 (India)

Website – www.ptesglobal.com

Contact : Mr. Sanjay Kumbhar

Phone : +91 7588160143

Skype : sanjay.kumbhar12

**Email : sourcing.ptes@gmail.com /
sales@ptesglobal.com**