

Glasstech Refractory

We

recycle

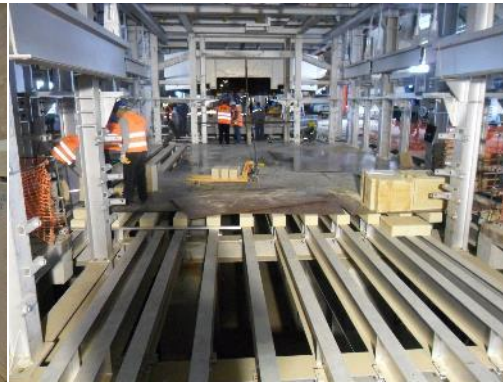
dismantle

construct

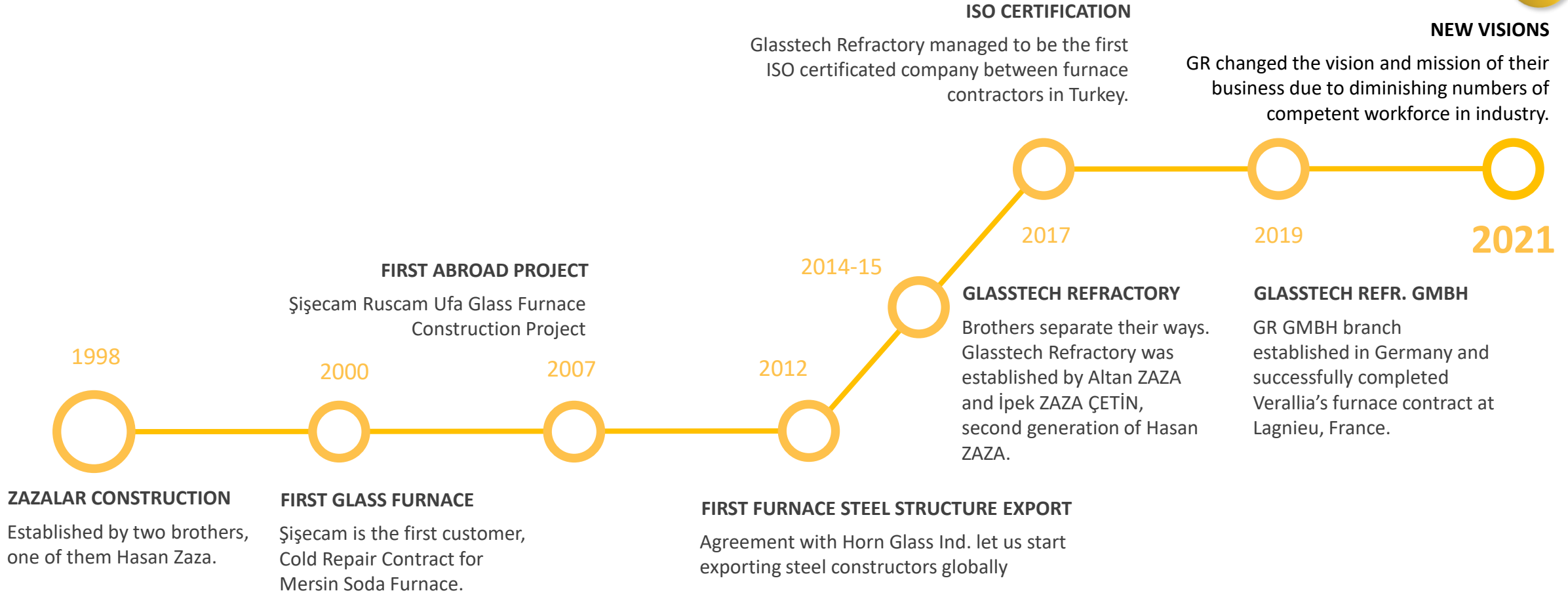
repair

service

glass furnaces all around the world.



BRIEF HISTORY



INFO



Main Office
located in Istanbul,
Turkey

11 Office
118 Field employees

23 years of
experience on glass
furnaces

35,200 t/d
total capacity of
assembled furnaces

45% market share
in Turkey glass
furnaces market

Touched
71 different furnaces
in 4 continents



İPEK ZAZA ÇETİN
Bs. Physics Engineer, after professional
career returned to family business in
2008, managing director of GlassTech
Refractory

ALTAN ZAZA
More than 20 years of
hands-on experience,
directing all site operations
in GlassTech Refractory



VALUES

GLASSTECH REFRACTORY has two important values deep in the core which brings us to date in our success story

QUALITY

SAFETY

These values led us to continuously invest in

TRAINING

SUSTAINABILITY

EQUIPMENT

Thus our offer to customers are

**Solution
Oriented**

100% on-time job
completion

**Daily Progress
Follow-ups**

Customers always
know progress/plan
ratio

EU Standart

Full safety equipment
and training for
personnel

**ISO
Certification**

Quality certification
and professional
employees

**Competitive
Pricing**

We believe in long-
term customer-
contractor relations

INDUSTRIAL SOLUTIONS

Float Glass Furnaces



26

Container Glass Furnaces



32

Tableware Glass Furnaces



12

Soda Furnaces



5

Glass Fibre Furnaces

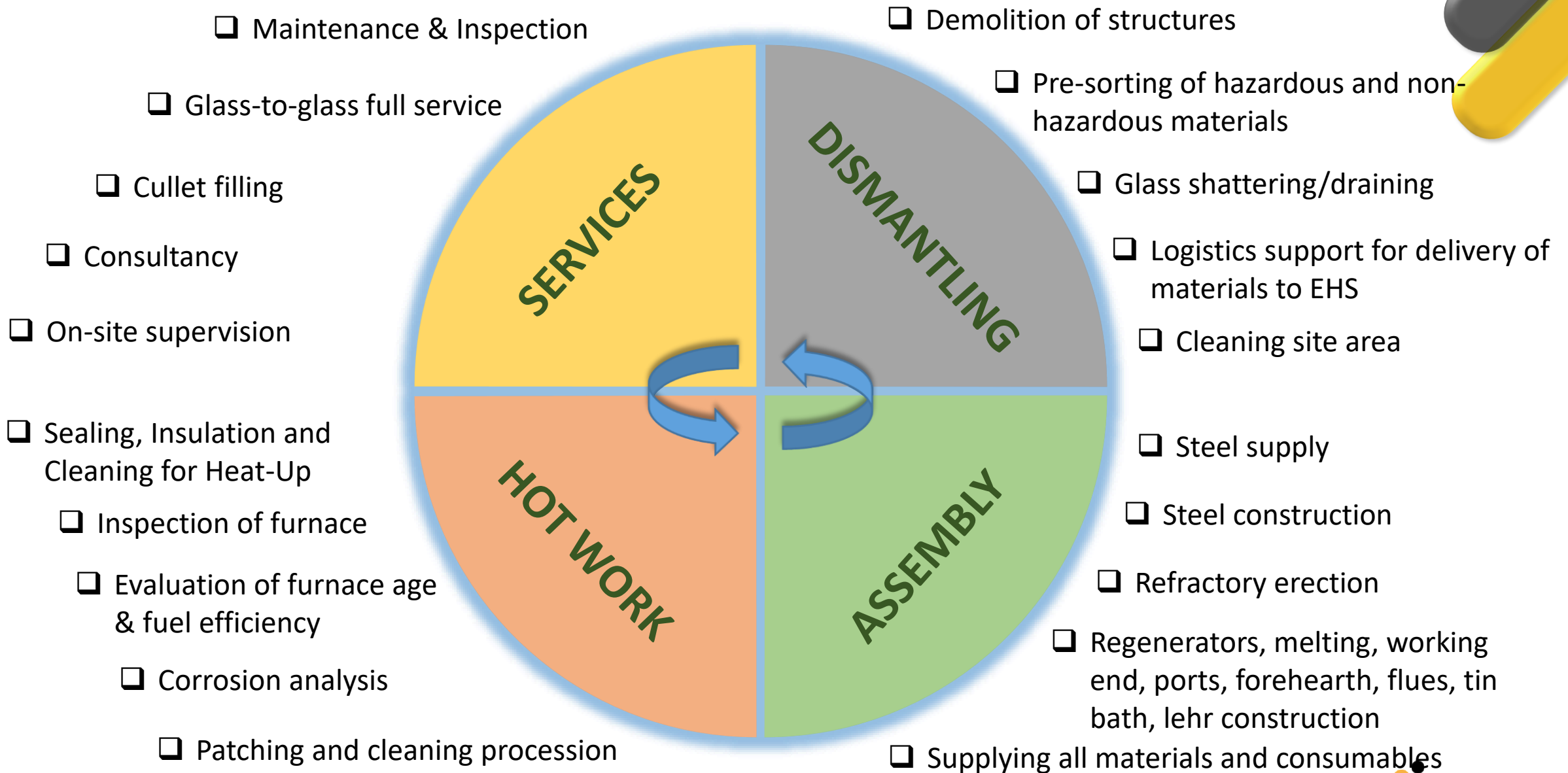


4

Waste Incineration Furnaces



1



SERVICES – Dismantling

Dismantling Services

Equipment rental

Demolition of structures

Pre-sorting disposals and recyclables

Glass shattering or glass draining

Separation of all materials, hazardous and non-hazardous

Preparation of shattered glass for cullet filling

Transportation of materials in-factory

Materials prepared to be ready for transportation
according to EHS standards

Cleaning site area



“All health & safety instructions according to EU regulations and plant rules will be followed” is included in our commitment.

SERVICES – Assembly & Cold Repair

Furnace Assembly & Cold Repair Services

Pre-assembly Inspection

Glass Shattering or Glass Draining (CR)

Refractories Demolition (CR)

Steel Dismantling (CR)

Steel Supply

Refractories Lining & Steel Installation

Furnace Heat Up & Take into Production

Cullet Filling

Operational Support until Molten Glass

Post-assembly Inspection

with Daily Follow-Up Reports



“All health & safety instructions according to EU regulations and plant rules will be followed” is included in our commitment.

SERVICES – Hot Work

Furnace Maintenance & Hot Repair Services

Hot Inspection Services

Evaluation of Furnace Age & Fuel Efficiency

Corrosion Analysis

Cleaning of Thermal Regenerators

Change of Electrode Holders

Patching Operations

Operational Support until Molten Glass

With Daily Follow-Up Reports



“All health & safety instructions according to EU regulations and plant rules will be followed” is included in our commitment.

SERVICES – Other

Waste Incineration

All staff and equipment
Steel & Refractory assembly
Heat-Up
Post-assembly inspection



Steel Sourcing

Engineering of steel works
Sourcing
Transportation to site

Supervision & Consultancy

Engineering consulting
On-site supervision
On-site consultancy
Productivity analysis



Glass-To-Glass Turn-key

Dismantling
Recyclables and disposals separation
Steel construction
Refractory lining
Furnace heat up and take into operation

SIGNIFICANT PROJECTS (last 5 years)

COMPANY	YEAR	CAPA(t/d)	TYPE	ASSEMBLY	DISMANTLING	COLD REPAIR	HOT REPAIR	GLASS-TO-GLASS	OTHER SERV.
Şişecam – Turkey	2021	500	Container						x
Şişecam – Turkey	2021	500	Container			x		x	
Şişecam Soda – Turkey	2020	300	Soda			x			
Şişecam – Turkey	2020	500	Container						x
GCA – Turkey	2020	400	Container	x					x
Beşler Cam – Turkey	2020	200	Fiber Glass	x					x
Şişecam – Turkey	2020	750	Float	x					x
Şişecam – Turkey	2020	500	Container				x		x
Şişecam - Turkey	2019	750	Float	x					
Horn – Nigeria	2019	550	Container						x
Horn – Czechia	2019	300	Container						x
Verallia – France	2019	300	Container	x	x	x		x	

SIGNIFICANT PROJECTS (last 5 years)

COMPANY	YEAR	CAPA(t/d)	TYPE	ASSEMBLY	DISMANTLING	COLD REPAIR	HOT REPAIR	GLASS-TO-GLASS	OTHER SERV.
Şişecam – Turkey	2018	300	Lime			x			
Lav – Turkey	2018	300	Tableware			x			x
Şişecam – Turkey	2018	500	Container			x			x
Şişecam – Turkey	2018	500	Container	x					
Turkmenecam – Turkmenistan	2017	250	Float	x					
Turkmenecam – Turkmenistan	2017	50	Container	x					
Lav – Turkey	2017	250	Tableware			x			x
Duzce Cam – Turkey	2016	800	Float	x					x
Paşabahçe – Turkey	2016	200	Tableware				x		
Paşabahçe – Turkey	2016	200	Tableware				x		x
Anadolu Cam – Turkey	2016	300	Container		x	x		x	
Buski – Turkey	2016	350	Waste Inc.	x					x

QUALITY CERTIFICATES

CERTIFICATE

GLASSTECH FIRIN REFRAKTER ÇELİK İNŞ. TURZ. SAN. VE TİC. A.Ş.

ORTA MAH. YALNIZ SELVİ CAD. UPTWINS DELUXE RES. NO:5 KAT:6 D:82 KARTAL / İSTANBUL

has implemented and maintains a **Environmental Management System**

DEMOLITION AND RE-CONSTRUCTION OF INDUSTRIAL FURNACE (SPECIFIED FLAT, BOTTLE, FRENCH FURNACES), NEW FURNACE CONSTRUCTION, HEATING UP WORKS, HOT REPAIR WORKS, PURCHASE OF SCRAP REFRACTORY, SALES OF NEW REFRACTORY, INSTALLATION AND SALE OF FURNACE'S STEEL CONSTRUCTION (TECHNOLOGICAL STEEL)

EA 28, 29/1

Through an audit, documented in a report, it was verified that the management System fulfills the requirements of the following standard:

ISO 14001:2015

Certificate registration no : QA-D/TUR/14001/0210
Valid from : 15.02.2019
Valid until : 26.01.2020
Date of original certification : 26.01.2018

B. Ables
Overseas Operation Manager
Begim ADARAN
Stuttgart 2916.02.15

ALBERK QA TECHNIC GMBH
Theodor Heuss Strasse 6 D-70174
Stuttgart GERMANY
Tel: +49 711 9454 4021 Fax: +49 711 9454 4046
www.glasstech.de

IAF DABUS

www.glasstech.de
Tel: +49 711 9454 4021 Fax: +49 711 9454 4046
www.glasstech.de

www.glasstech.de
Tel: +49 711 9454 4021 Fax: +49 711 9454 4046
www.glasstech.de

CERTIFICATE

GLASSTECH FIRIN REFRAKTER ÇELİK İNŞ. TURZ. SAN. VE TİC. A.Ş.

ORTA MAH. YALNIZ SELVİ CAD. UPTWINS DELUXE RES. NO:5 KAT:6 D:82 KARTAL / İSTANBUL

has implemented and maintains a **Occupational Health and Safety Management System**

DEMOLITION AND RE-CONSTRUCTION OF INDUSTRIAL FURNACE (SPECIFIED FLAT, BOTTLE, FRENCH FURNACES), NEW FURNACE CONSTRUCTION, HEATING UP WORKS, HOT REPAIR WORKS, PURCHASE OF SCRAP REFRACTORY, SALES OF NEW REFRACTORY, INSTALLATION AND SALE OF FURNACE'S STEEL CONSTRUCTION (TECHNOLOGICAL STEEL)

EA 28, 29/1

Through an audit, documented in a report, it was verified that the management System fulfills the requirements of the following standard:

OHSAS 18001:2007

Certificate registration no : QA-D/TUR/OHSAS/0073
Valid from : 15.02.2019
Valid until : 26.01.2020
Date of original certification : 26.01.2018

B. Ables
Overseas Operation Manager
Begim ADARAN
Stuttgart 2916.02.15

ALBERK QA TECHNIC GMBH
Theodor Heuss Strasse 6 D-70174
Stuttgart GERMANY
Tel: +49 711 9454 4021 Fax: +49 711 9454 4046
www.glasstech.de

IAF DABUS

www.glasstech.de
Tel: +49 711 9454 4021 Fax: +49 711 9454 4046
www.glasstech.de

www.glasstech.de
Tel: +49 711 9454 4021 Fax: +49 711 9454 4046
www.glasstech.de

CERTIFICATE

GLASSTECH FIRIN REFRAKTER ÇELİK İNŞ. TURZ. SAN. VE TİC. A.Ş.

ORTA MAH. YALNIZ SELVİ CAD. UPTWINS DELUXE RES. NO:5 KAT:6 D:82 KARTAL / İSTANBUL

has implemented and maintains a **Quality Management System**

DEMOLITION AND RE-CONSTRUCTION OF INDUSTRIAL FURNACE (SPECIFIED FLAT, BOTTLE, FRENCH FURNACES), NEW FURNACE CONSTRUCTION, HEATING UP WORKS, HOT REPAIR WORKS, PURCHASE OF SCRAP REFRACTORY, SALES OF NEW REFRACTORY, INSTALLATION AND SALE OF FURNACE'S STEEL CONSTRUCTION (TECHNOLOGICAL STEEL)

Non-applicable Clauses : -

FA 28, 29/1

Through an audit, documented in a report, it was verified that the management System fulfills the requirements of the following standard:

ISO 9001:2015

Certificate registration no : QA-D/TUR/9001/0733
Valid from : 15.02.2019
Valid until : 26.01.2020
Date of original certification : 26.01.2018

B. Ables
Overseas Operation Manager
Begim ADARAN
Stuttgart 2916.02.15

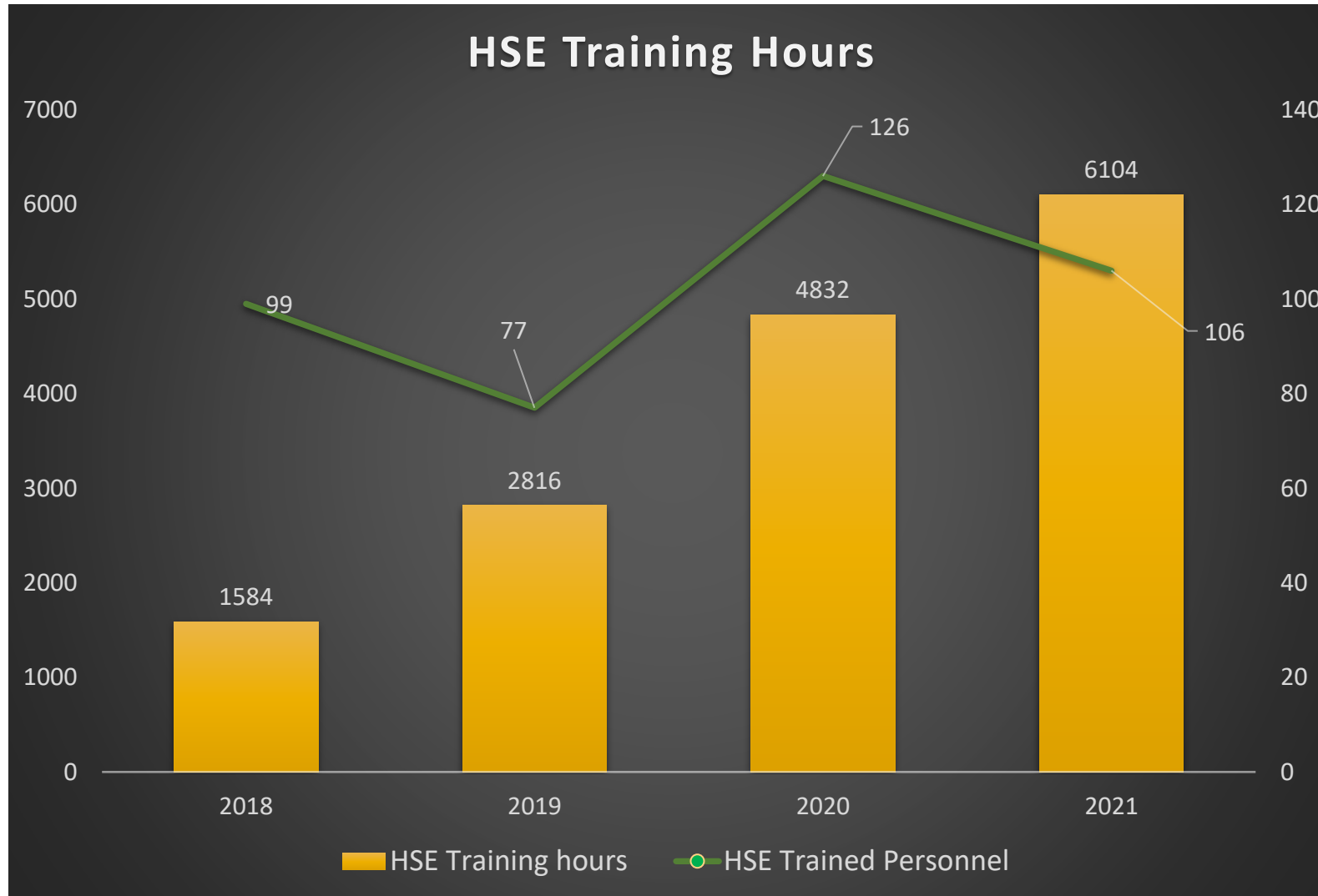
ALBERK QA TECHNIC GMBH
Theodor Heuss Strasse 6 D-70174
Stuttgart GERMANY
Tel: +49 711 9454 4021 Fax: +49 711 9454 4046
www.glasstech.de

IAF DABUS

www.glasstech.de
Tel: +49 711 9454 4021 Fax: +49 711 9454 4046
www.glasstech.de

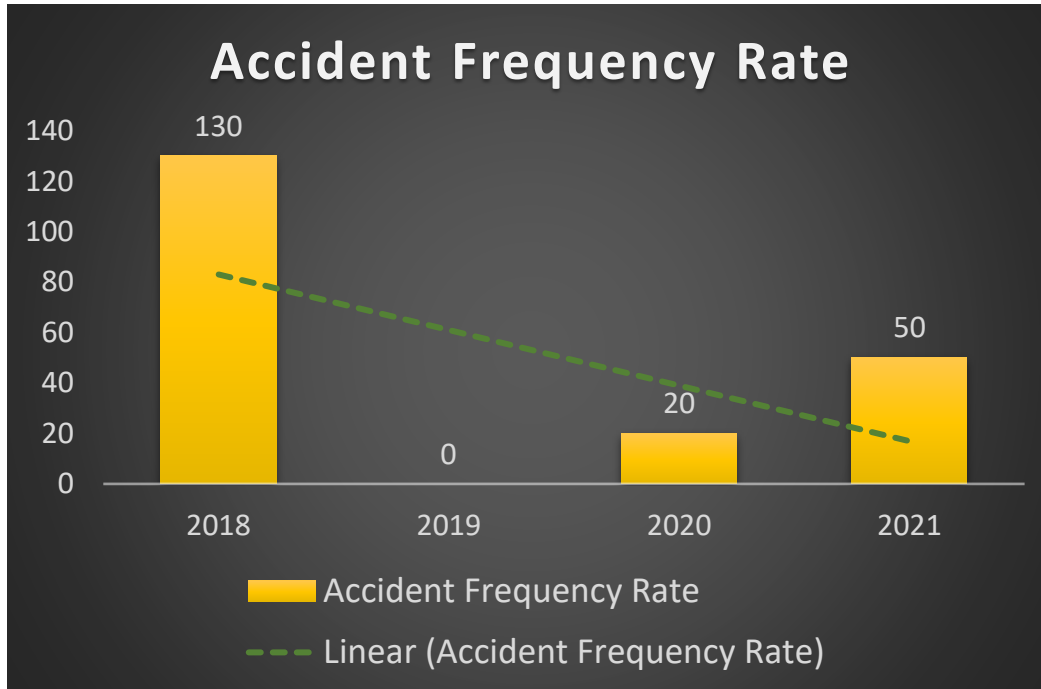
www.glasstech.de
Tel: +49 711 9454 4021 Fax: +49 711 9454 4046
www.glasstech.de

SAFETY STATS – HSE Trainings



- ❑ HSE trainings provided to all personnel on a regular basis in accordance with the Turkish OSH legislation (Law nr. 6331) which is 16 hrs. per employee per year.
- ❑ We focused on trainings more for the last 3 years and averaged more than 60 hrs. of trainings per employee last year.

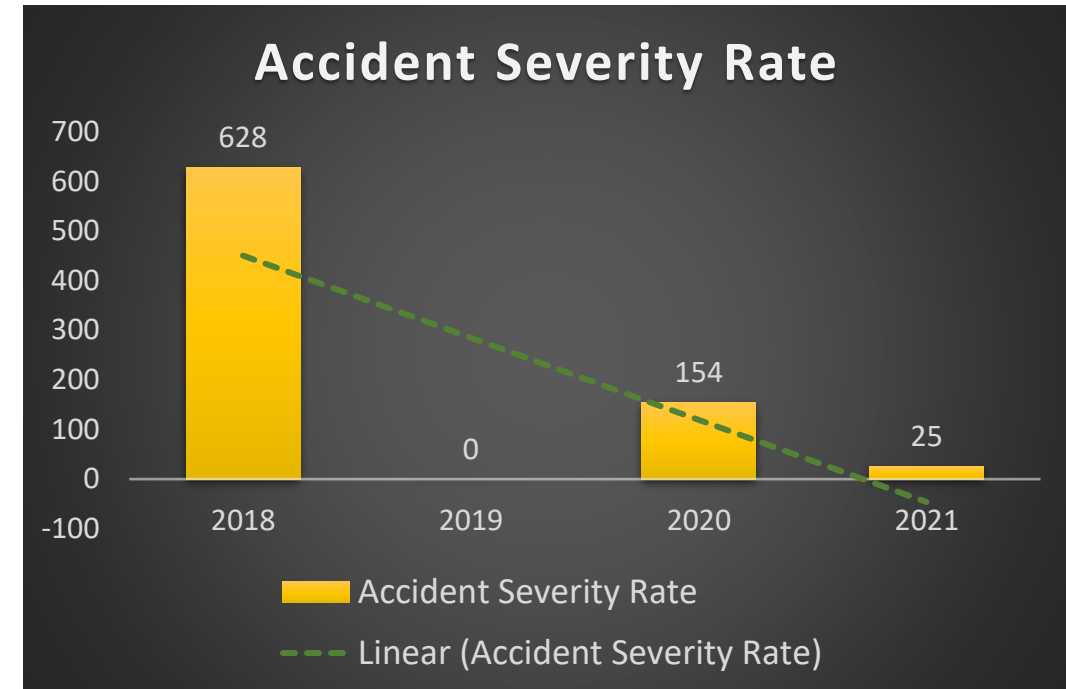
SAFETY STATS – Accidents



	2018	2019	2020	2021
Total man hours	46,200	89,701	91,108	40,582
# of accidents	6	0	2	2

$$\text{Frequency Rate (FR)} = \frac{\text{Number of accidents} \times 1\,000\,000}{\text{Total man hours of work performed}}$$

- Accident Frequency Rate is number of accident per 1 million man hours worked.
- Accident Severity Rate is days lost by labor disability per 1 million man hours worked.



	2018	2019	2020	2021
Total man hours	46,200	89,701	91,108	40,582
# man days lost	29	0	14	1

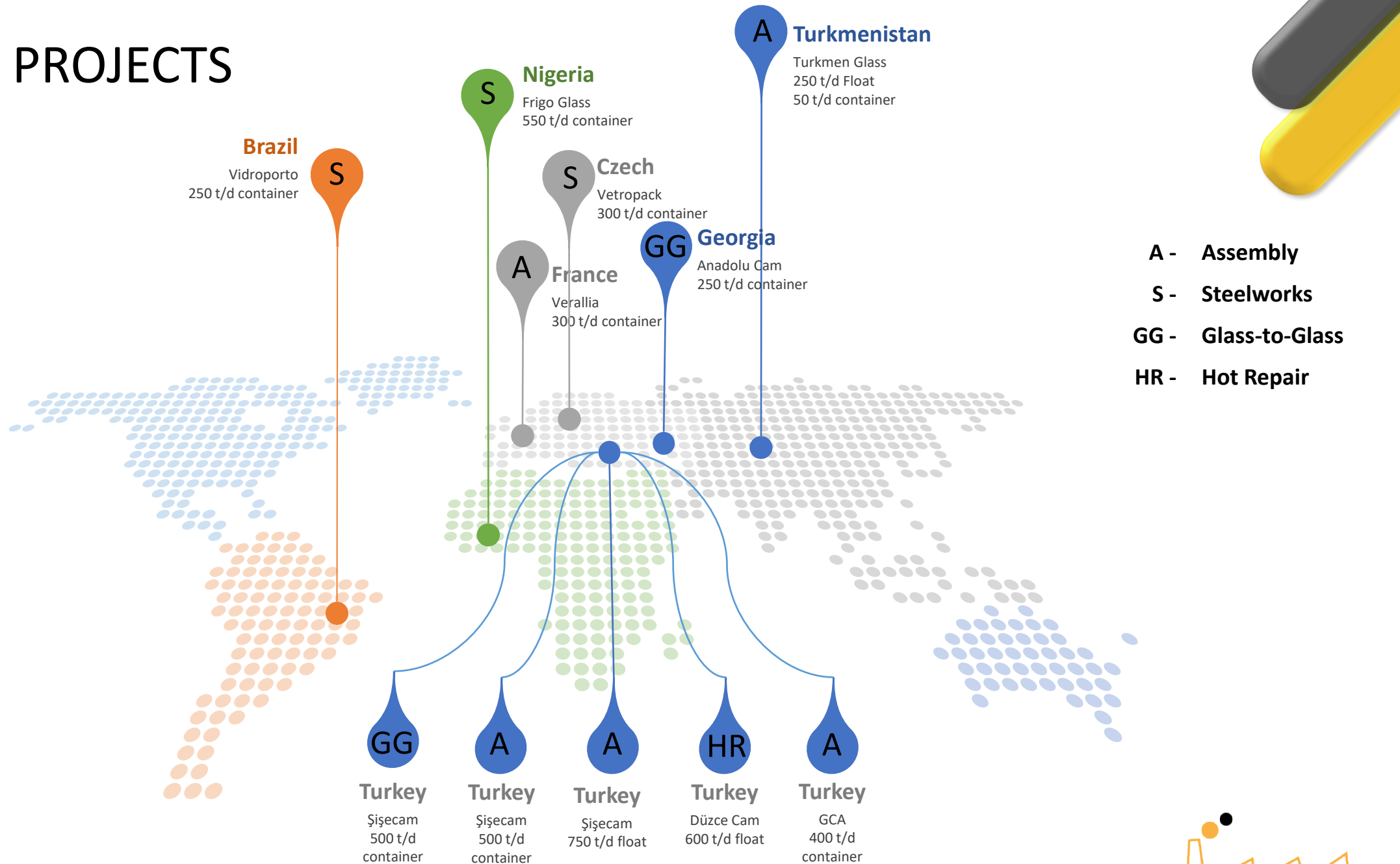
$$\text{Severity Rate (SR)} = \frac{\text{Number of days lost by labor disability} \times 1\,000\,000}{\text{Total man hours of work performed}}$$

SAFETY STATS – Safety Performance / Project

Years	# of Projects	Project Names					
		GCA, DUZCE CAM, SISECAM	SISECAM, DUZCE CAM, GCA	VERALLIA, SISECAM, TURKMEN GLASS, HORN	SISECAM, TURKMEN GLASS, HORN	SISECAM, DUZCE CAM, GCA, BESLER	
2016	6				0		# of work accidents
2017	5			0			
2018	6	3	3				
2019	5					0	
2020	8	2					
2021	4		2				
TOTAL	34	5	5	0	0	0	

- ❑ Glasstech Refractory has completed 34 projects since 2016.
- ❑ We have completed 24 projects out of 34 projects with “0 work accidents”.
- ❑ Our main HSE KPI for 2022 is "0 work accidents".

MAJOR PROJECTS



REFERENCES



CONTACT INFO



Orta Mah. Yalnız Selvi Cad. Uptwins Deluxe Res. No:5 Kat:16 D:160 Kartal / İstanbul / Turkey

Phone : + 90 216 510 06 86 , +90 850 800 75 85

info@glasstechrefractory.com

www.glasstechrefractory.com

SALES & SUPPORT

Phone : + 90 539 421 42 85

Mrs. Pelin Yilmaz

pelin@glasstechrefractory.com

PARTNERSHIPS & PROJECTS

Phone : + 90 532 486 43 44

Mrs. Ipek Zaza Çetin

ipek@glasstechrefractory.com

“How you see your future is much more important than what happened in your past”

Zig Ziglar

